

An aerial view of an outdoor patio area. The floor is made of large, square, light grey porcelain tiles. The joints between the tiles are filled with a vibrant green artificial grass. In the center-left, there is a square wooden coffee table with a small potted plant and a white bowl on it. To the right, there is a wooden armchair with white cushions. The scene is brightly lit, casting soft shadows.

20mm
OUTDOOR
PORCELAIN TILES

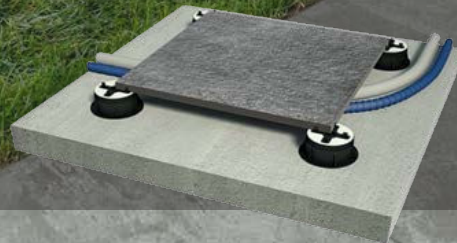
*dtw*ceramics
UK Limited

TRANSFORMING YOUR OUTDOOR SPACE

INSTALLATION
- USING SAND & CEMENT



DRY INSTALLATION
- ON RAISED SUPPORTS



DRY INSTALLATION
- ON GRAVEL OR SAND



DRY INSTALLATION
- ON GRASS



Our outdoor porcelain tiles offer a modern, sleek look that brings interior design to the outdoors. With a thickness of 20mm, these tiles are perfect for patios, terraces and pathways and will transform your garden into a space that you will be able to enjoy throughout the year.

Creating a patio may require a professional installer, though, there are simpler methods you can do yourself that will make all the difference to your garden.

On Sand & Cement (Mortar)

A stable flat foundation comprising of a hardcore base, is essential for your tiles to sit on.

Combine sand and cement in the correct ratio (usually 4:1) and mix together with water.

Using a slurry primer to the underside of the tile place tile in position on top of a 50mm bed of mortar. Fill the gaps with mortar or exterior grout.



Advantages

- Perfect for patio areas and general spaces of heavy usage
- Suitable for swimming pool sides
- Very stable and long lasting

On Raised Supports

Can only be used on top of a sturdy level base such as concrete or over existing tiles or slabs. During installation, if there are any areas that are not level, the supports can be adjusted to achieve a flat surface.

The raised installation allows for effective water drainage and offers space for electrical equipment and plumbing facilities (see page 17).



Advantages

- Simple to install, no need for adhesives
- Supports can be adjusted to compensate for uneven surfaces
- Gives clearance under the slabs allowing room for cables and other systems

On Gravel or Sand

Simple and rapid, with dry installation on gravel or sand, there is no need to use adhesives or grout. Make sure the area is level by using a rake before laying your tiles. After installation, the surface can be used immediately.

This solution also facilitates drainage of water and allows you to remove the slabs and use them elsewhere as they are not a permanent fixture.



Advantages

- Simple to install, no need for adhesives
- Slabs can be removed and used elsewhere
- Allows drainage of rainwater

On Grass

Create a pathway and add a personal, stylish touch to your garden.

The immediate area to be tiled has to be prepared by applying a layer of gravel onto which the slabs will be placed. The gravel bed gives more stability and compensates for any differences in level. We advise leaving a gap between the slabs to allow grass to grow through.



Advantages

- Simple to install, no need for adhesives
- Slabs can be removed and used again and again
- Allows you to achieve a visual impact in no time at all

IT ROCKS



Featured: Ash 610 x 610 & 450 x 900



SANDSTONE



COAL

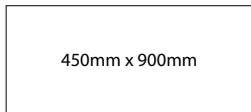
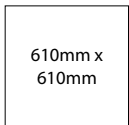


ASH



METAL

Sizes Available



Matt Finish

Glazed Porcelain



Slip Rating R11

12mm It Rocks version available for indoor use.



Featured: Metal 610 x 610 & 450 x 900



Photo Featuring: Black 595mm x 595mm



Photo Featuring: Bone 595mm x 595mm

Sizes Available

595mm x
595mm

1200mm x 595mm



BONE



BLACK



GREY



WHITE

Matt Finish

Glazed Porcelain



Slip Rating R11

**10mm Rock version available
for indoor use, slip rating R9**

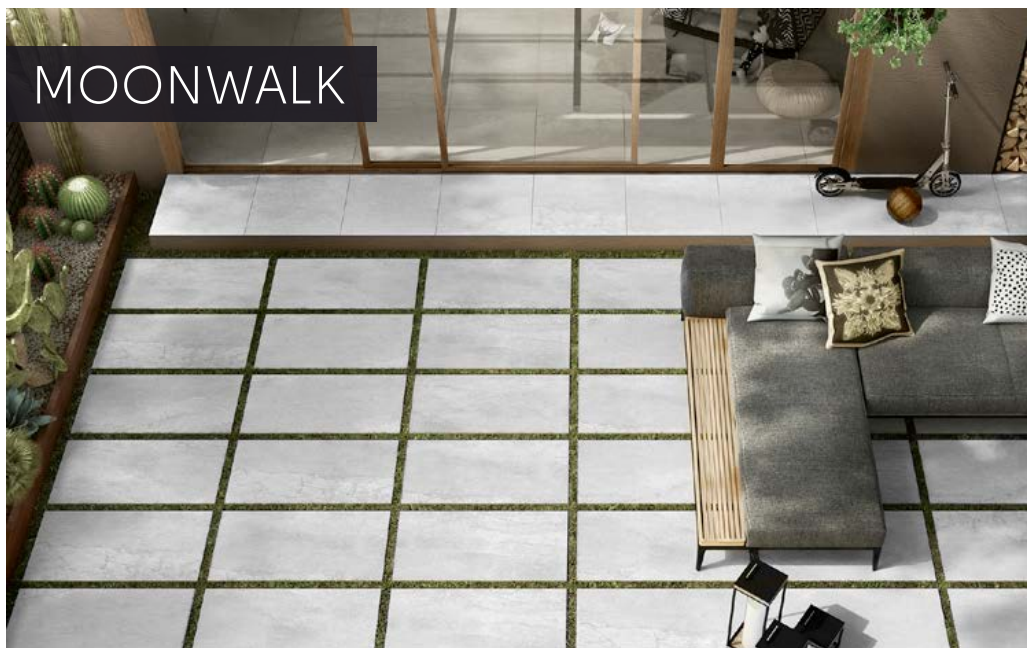
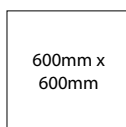


Photo Featuring: Pearl 600mm x 600mm

Sizes Available



Matt Finish

Glazed Porcelain



Slip Rating **R11**

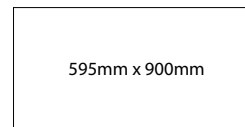


PEARL



Photo Featuring: Pearl 595mm x 900mm

Sizes Available

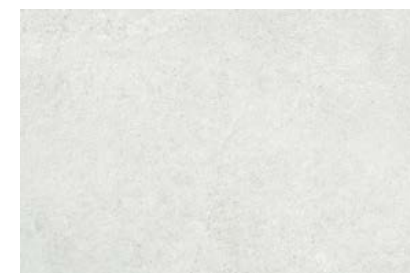


Matt Finish

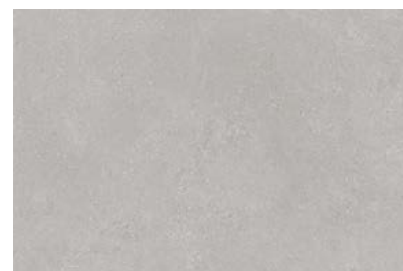
Glazed Porcelain



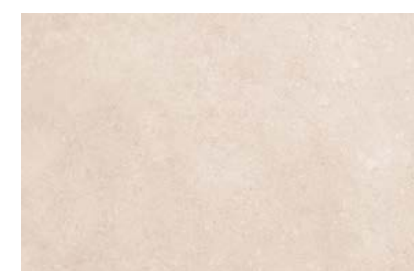
Slip Rating **R11**



PEARL



GREY



MINK



Photo Featuring: Antracita 595mm x 900mm



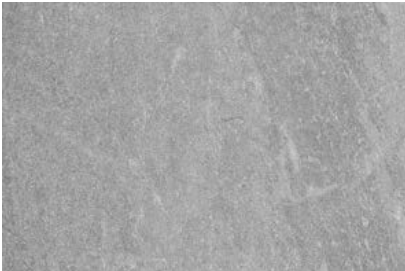
Photo Featuring: Grey 595mm x 900mm



CREAM



PEARL



ANTRACITA




GREY

Sizes Available

595mm x 900mm

Matt Finish

Glazed Porcelain

 Slip Rating R11

BURLINGTONSTONE



Photo Featuring: Gris 600mm x 900mm



Photo Featuring: Marfil 600mm x 900mm



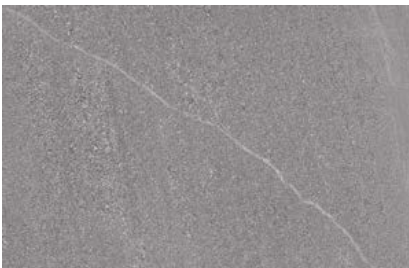
WHITE



PERLA



MARFIL



GRIS

Sizes Available



Matt Finish

Glazed Porcelain



Slip Rating R11



Photo Featuring: Cervinia 450mm x 900mm



DAVOS



MORITZ



CERVINIA



ZERMATT

Sizes Available

450mm x 900mm

Matt Finish
Glazed Porcelain
To Order 3-4 weeks

 Slip Rating **R11**

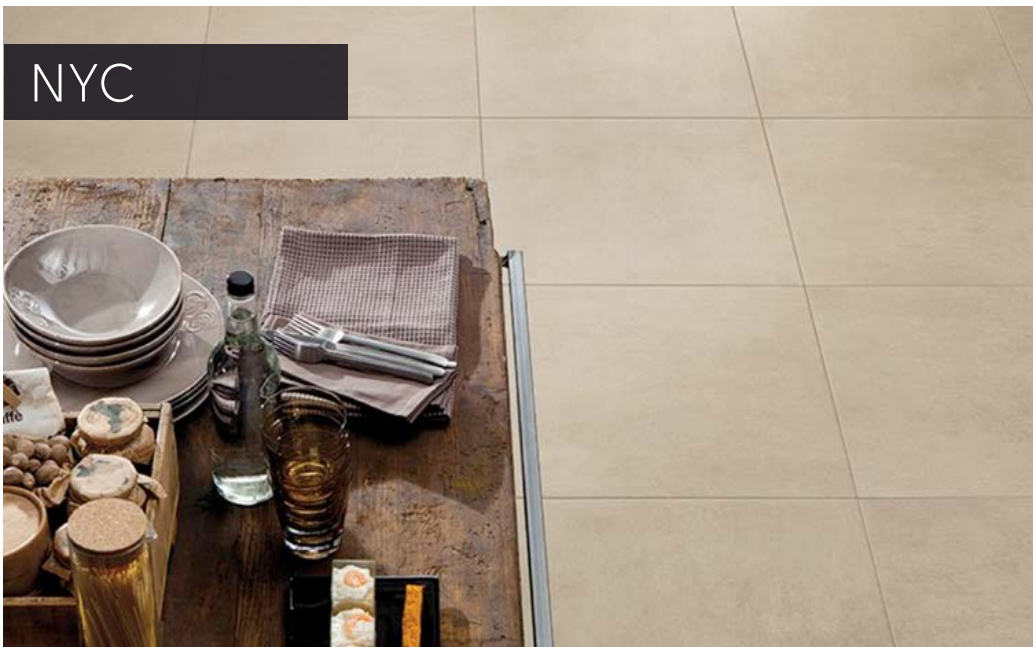


Photo Featuring: Midtown 600mm x 600mm



SOHO



MIDTOWN



NOLITE



TRIBECA

Sizes Available

600mm x
600mm

Matt Finish
Glazed Porcelain
To Order 3-4 weeks

 Slip Rating **R11**

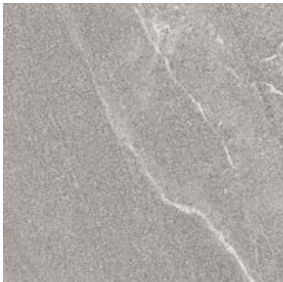
VOLCANO



Photo Featuring: Marsili 450mm x 900mm



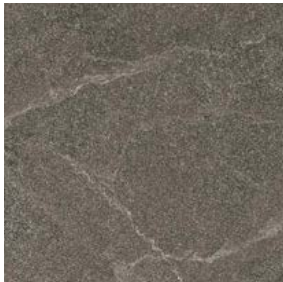
SALINA



ETNA



MARSILI



VESUVIO

Sizes Available

600mm x 600mm

450mm x 900mm

900mm x 900mm

Matt Finish

Glazed Porcelain

To Order 3-4 weeks



UPNUANCE



Photo Featuring: Crete 600mm x 600mm



LVOIRE



CHARBON



CRETE



CENDRE

Sizes Available

600mm x 600mm

Matt Finish

Glazed Porcelain

To Order 3-4 weeks



STONE HEART



Photo Featuring: Sunstone 600mm x 1200mm



SILVERSTONE



NIGHTSTONE



SUNSTONE



LANDSTONE

Sizes Available

600mm x 1200mm

Matt Finish

Glazed Porcelain

To Order 3-4 weeks



Slip Rating R11

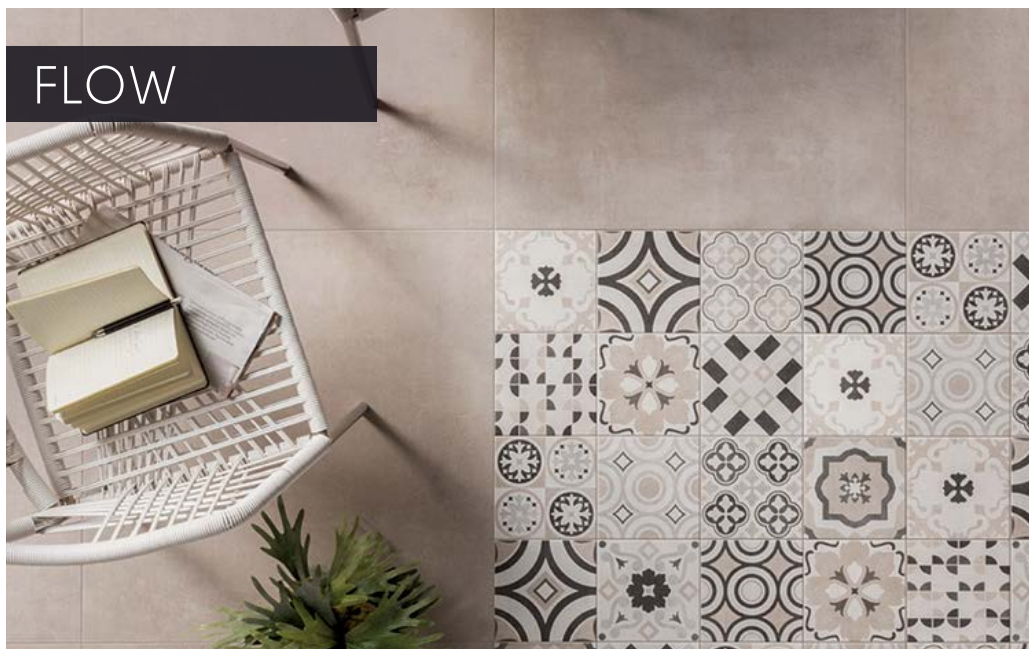
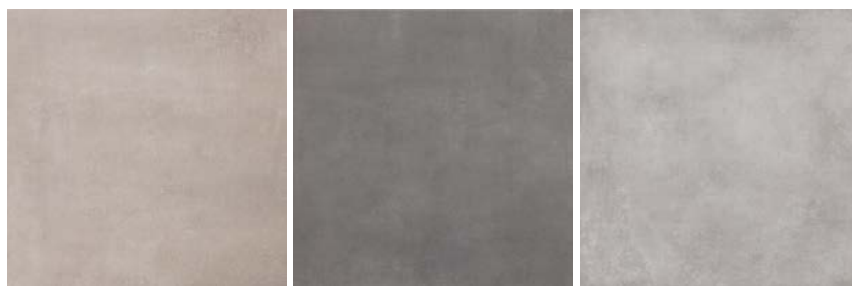


Photo Featuring: Taupe 800mm x 800mm

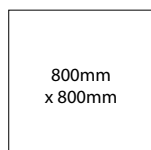


TAUPE

SMOKE

GREY

Sizes Available



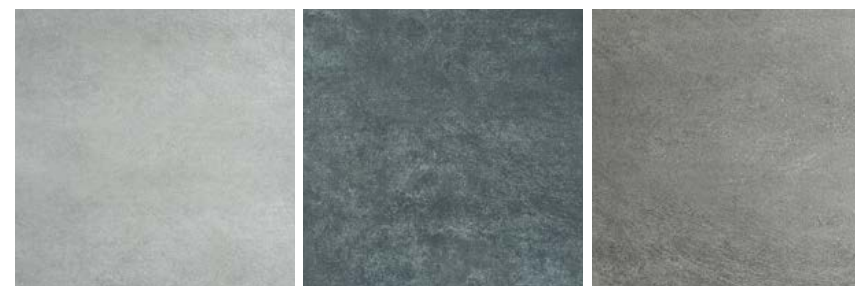
Matt Finish

Glazed Porcelain

To Order 3-4 weeks



Photo Featuring: Sante Fe 600mm x 600mm

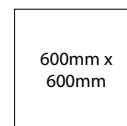


SANTA MONICA

SAINT LOIS

SANTE FE

Sizes Available



Matt Finish

Glazed Porcelain

To Order 3-4 weeks



ELEMENTS



Photo Featuring: Air 600mm x 600mm



EARTH



FIRE



AIR

Sizes Available

600mm x
600mm

600mm x 900mm

Matt Finish

Glazed Porcelain

To Order 3-4 weeks

 Slip Rating R11



IT'S DIFFERENT

Photo Featuring: Dark Soul 600mm x 1200mm



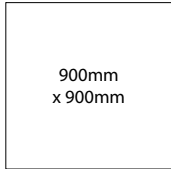
STILE URBANO

Photo Featuring: Mattone 600mm x 600mm

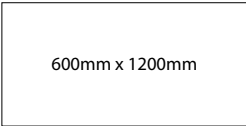


DARK SOUL NICKEL CHROME GREY LONDON BLACK MIRROR

Sizes Available



900mm
x 900mm



600mm x 1200mm

Matt Finish
Glazed Porcelain
To Order 3-4 weeks



CEMENTO FERRO MATTONE

Sizes Available



600mm x
600mm

Matt Finish
Glazed Porcelain
To Order 3-4 weeks





SLOWOOD

Realistic
Woodgrain



Photo Featuring: Gelso 300mm x 1200mm



GELSO



MANDORLO



NOCCIOLO

Sizes Available

300mm x 1200mm

Matt Finish

Glazed Porcelain

To Order 3-4 weeks

 Slip Rating R11

Why use Paving Pedestals?

Using our 20mm garden tiles are an excellent choice for anyone looking for a durable, stylish, and low-maintenance solution to enhance their outdoor spaces. Whether you are creating a relaxing patio, a functional walkway, or a decorative garden path, garden tiles offer a wide range of benefits to suit your needs.

There are several options on how you can install our outdoor tiles as highlighted on page 3, one of which is the use of pedestals, so why use them?

Levelling Uneven Surfaces: Paving pedestals help create a level and stable base even on sloped or uneven surfaces. This is particularly useful for areas where traditional mortar or adhesive methods might not be effective.

Quick and Easy Installation: Using pedestals simplifies the installation process. They can be placed quickly without the need for digging, excavation or time consuming mortar setting and curing. (Providing you have an existing solid base).

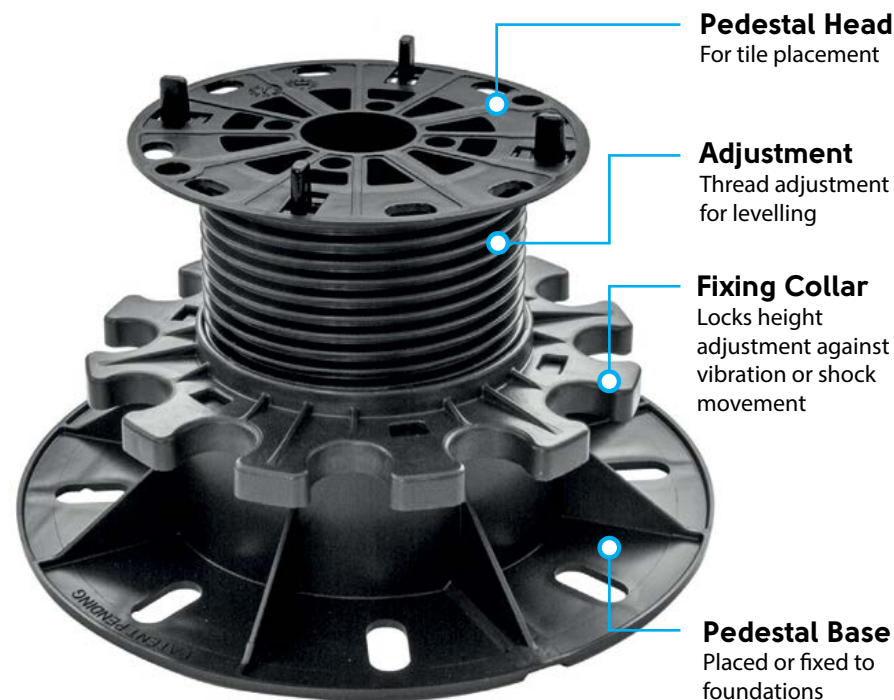
Easy Drainage: They allow for better water drainage underneath the surface, which helps prevent water accumulation or pooling.

Paving Pedestals create a level surface, are adjustable, easy to install, and require minimal maintenance, providing long-term durability and flexibility. As no adhesive is involved if your moving house the tiles and pedestals can even be removed for use in your new property! If you need further information speak to one of the DTW Ceramics team.

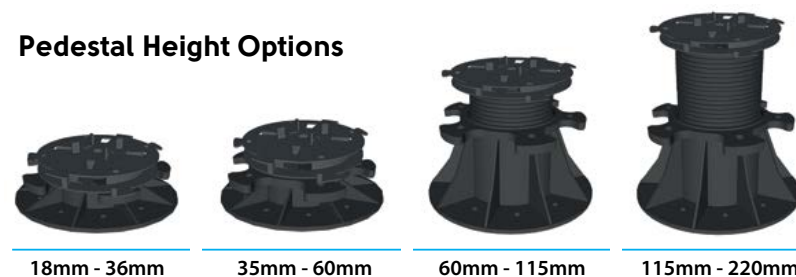
Adjustability: Paving pedestals are height adjustable, allowing for precise control over the level of the flooring. This flexibility makes it easier to create a smooth, uniform surface over irregular areas.

Easier Maintenance and Access: Since the system is raised, it creates an accessible void space between the paving surface and the underlying structure, making it easier to access utilities, wiring, or pipes for maintenance without needing to remove the entire surface.

Aesthetic Flexibility: Paving pedestals can accommodate various types of paving materials, including stone, wood, concrete, and porcelain tiles.



Pedestal Height Options



dtw ceramics

trade outlet

Essential Tiling Tools for Installing your Outdoor Tiles

Ahead of starting any tiling project, it's important to ensure that you have the right tools and materials to complete the job effectively.

As a guide only, here are some of the items you made need, depending on the type of tile installation you are undertaking.

All these products are available in our trade Outlet*. If you would like further information or advice please contact one of the DTW team.

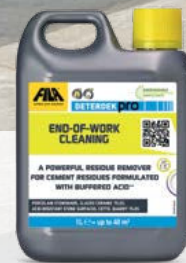


SPIRIT LEVEL

**TAPE
MEASURE**



**ANGLE GRINDER
& CUTTER**



DETERDEK PRO
End of work cleaning



**SLURRY
PRIMER**



**PROPAVE EXTERNAL
TILING GROUT**



**TILE SPACERS
& LEVELLERS**





WORK GLOVES



**CHROME
TILE TRIM**



**HEAVY DUTY
SUCTION CUP**



**HYDRO SPONGE
& HOLDER**



**RUBBER
MALLET**



**SQUARE
NOTCHED TROWEL**



**BUCKET
TROWEL**



**POINTING
TROWEL**



dtwceramics
UK Limited

SHOWROOM

48 Fitzherbert Road, Farlington, Portsmouth PO6 1RU.
E. info@dtw-tiles.co.uk Tel: 02392 799 007

TRADE OUTLET

49 Fitzherbert Road, Farlington, Portsmouth PO6 1RU.
E. trade@dtw-tiles.co.uk Tel: 02392 799 007



Frost
Proof



Low
Maintenance



Fade
Resistant



Good Slip
Resistance



Scratch
Resistance